

Gas Discharge Tube - PG28E-L Series

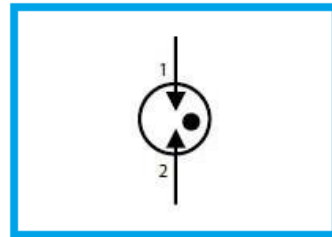
Features

- DC Spark-over voltage: 75~4000V
- Low Capacitance
- Micro-Gap Design
- Stable breakdown voltage
- RoHS & HF compliant
- High holdover voltage
- High insulation resistance
- Large absorbing transient current capability.



Applications

- Communication equipment
- Test equipment
- Data lines
- CATV equipment
- Power Supplies
- Telecom SLIC protection
- Telecommunications

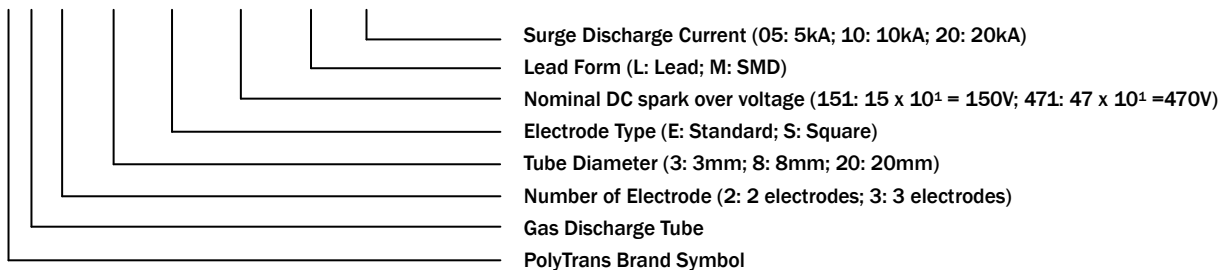


General Characteristics Definition

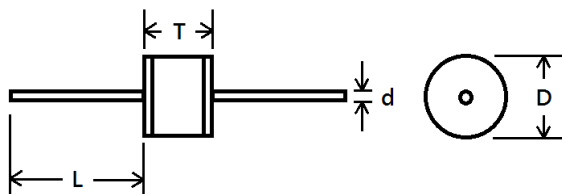
- Operating temperature: -40 ~ 85°C
- Storage temperature: -40 ~ 85°C

Part Number Code

P G □ □ □ □ □ □ □ □



Physical Dimensions



Symbol	Dimension (mm)
D	8.0±0.5
T	6.0±0.5
L	≥20.0
d	0.8±0.1

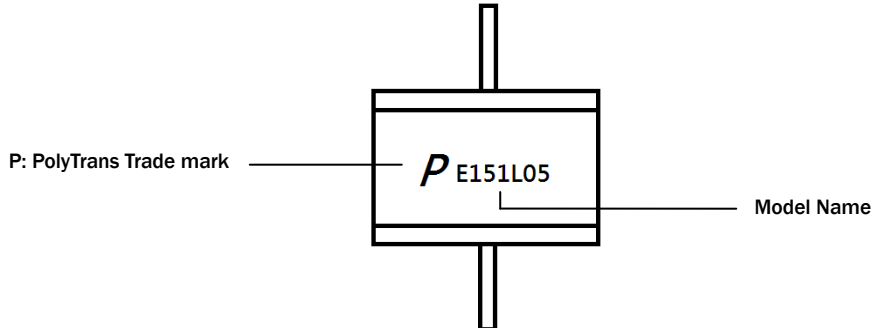
Gas Discharge Tube - PG28E-L Series

Electrical Characteristics

Part Number	DC Spark-over Voltage @ 100V/S	Impulse Spark-over Voltage @ 1kV/ μ S	Impulse Discharge Current	AC Discharge Current	Minimum Insulation Resistance	Maximum Capacitance @ 1.0 MHz	UL Certificate (E474915)
	(V)		8/20 μ s 10 Hits	1s/5 Times			
	(V)		(kA)	(A)			
PG28E075L20	75 \pm 20%	\leq 600	20	20	1	1.0	✓
PG28E091L20	90 \pm 20%	\leq 600	20	20	1	1.0	✓
PG28E151L20	150 \pm 20%	\leq 600	20	20	1	1.0	✓
PG28E201L20	200 \pm 20%	\leq 700	20	20	1	1.0	✓
PG28E231L20	230 \pm 20%	\leq 700	20	20	1	1.0	✓
PG28E301L20	300 \pm 20%	\leq 900	20	20	1	1.0	✓
PG28E351L20	350 \pm 20%	\leq 1000	20	20	1	1.0	✓
PG28E401L20	400 \pm 20%	\leq 1000	20	20	1	1.0	✓
PG28E471L20	470 \pm 20%	\leq 1200	20	20	1	1.0	✓
PG28E075L10	75 \pm 20%	\leq 600	10	10	1	1.0	✓
PG28E091L10	90 \pm 20%	\leq 600	10	10	1	1.0	✓
PG28E151L10	150 \pm 20%	\leq 600	10	10	1	1.0	✓
PG28E201L10	200 \pm 20%	\leq 700	10	10	1	1.0	✓
PG28E231L10	230 \pm 20%	\leq 700	10	10	1	1.0	✓
PG28E301L10	300 \pm 20%	\leq 900	10	10	1	1.0	✓
PG28E351L10	350 \pm 20%	\leq 1000	10	10	1	1.0	✓
PG28E401L10	400 \pm 20%	\leq 1000	10	10	1	1.0	✓
PG28E471L10	470 \pm 20%	\leq 1200	10	10	1	1.0	✓
PG28E601L10	600 \pm 20%	\leq 1400	10	10	1	1.0	✓
PG28E075L05	75 \pm 20%	\leq 600	5	5	1	1.0	✓
PG28E091L05	90 \pm 20%	\leq 600	5	5	1	1.0	✓
PG28E151L05	150 \pm 20%	\leq 600	5	5	1	1.0	✓
PG28E201L05	200 \pm 20%	\leq 700	5	5	1	1.0	✓
PG28E231L05	230 \pm 20%	\leq 700	5	5	1	1.0	✓
PG28E301L05	300 \pm 20%	\leq 900	5	5	1	1.0	✓
PG28E351L05	350 \pm 20%	\leq 1000	5	5	1	1.0	✓
PG28E401L05	400 \pm 20%	\leq 1000	5	5	1	1.0	✓
PG28E471L05	470 \pm 20%	\leq 1200	5	5	1	1.0	✓
PG28E601L05	600 \pm 20%	\leq 1400	5	5	1	1.0	✓
PG28E801L03	800 \pm 20%	\leq 1400	3	3	1	1.0	✓
PG28E102L03	1000 \pm 20%	\leq 1700	3	3	1	1.0	✓
PG28E122L03	1200 \pm 20%	\leq 1900	3	3	1	1.0	✓
PG28E152L03	1500 \pm 20%	\leq 2200	3	3	1	1.0	✓
PG28E202L03	2000 \pm 20%	\leq 2700	3	3	1	1.0	✓
PG28E252L03	2500 \pm 20%	\leq 3500	3	3	1	1.0	✓
PG28E272L03	2700 \pm 20%	\leq 3700	3	3	1	1.0	✓
PG28E302L03	3000 \pm 20%	\leq 4000	3	3	1	1.0	✓
PG28E362L03	3600 \pm 20%	\leq 4600	3	3	1	1.0	✓
PG28E402L03	4000 \pm 20%	\leq 5000	3	3	1	1.0	✓

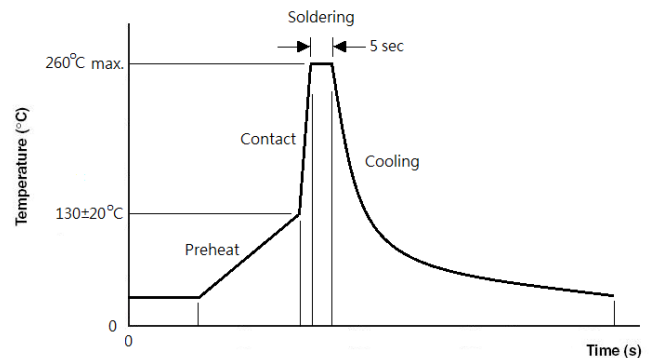
Gas Discharge Tube - PG28E-L Series

Marking Definitions



Lead Free Wave Soldering Recommendations

Preheat	
- Temperature Min (T _{smin})	110°C
- Temperature Max (T _{smax})	150°C
- Time (T _{smin} to T _{smax})	30-90 seconds
- Average Ramp-Up Rate	1~3°C/second
Peak Temperature	260°C
Max Time at Peak Temperature	5 seconds
Ramp-Down Rate	5 °C /second max.



Note: If the wave soldering temperatures exceed the recommended profile, devices may not meet the performance requirements.

Packaging Information

Part Number	Quantity	
	EA/Tray	EA/Carton
PG28E-L Series	100	5000