

Gas Discharge Tube – PG35E-L Series

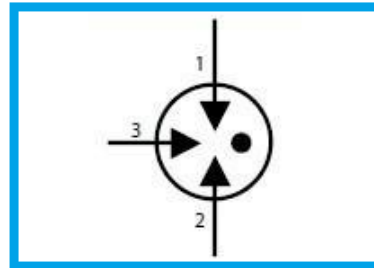
Features

- DC Spark-over voltage: 75~600V
- Low Capacitance
- Micro-Gap Design
- Stable breakdown voltage
- RoHS & HF compliant
- High holdover voltage
- High insulation resistance
- Large absorbing transient current capability.



Applications

- Communication equipment
- Test equipment
- Data lines
- CATV equipment
- Power Supplies
- Telecom SLIC protection
- Telecommunications

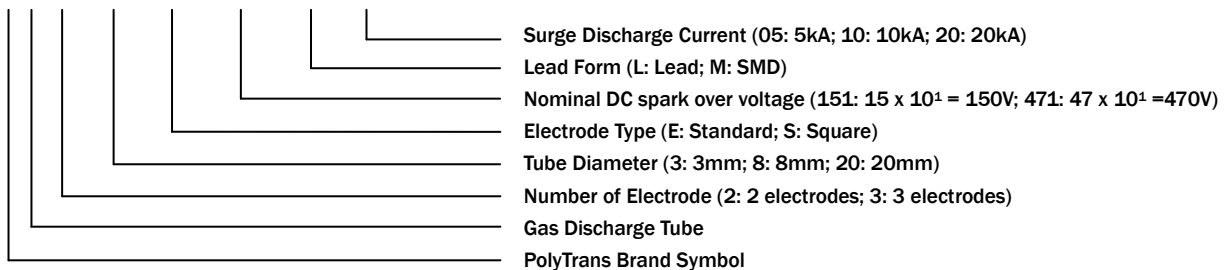


General Characteristics Definition

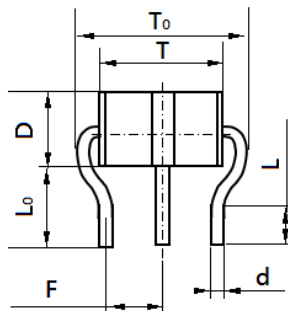
- Operating temperature: -40 ~ 85°C
- Storage temperature: -40 ~ 85°C

Part Number Code

P G □ □ □ □ □ □ □ □ □ □



Physical Dimensions



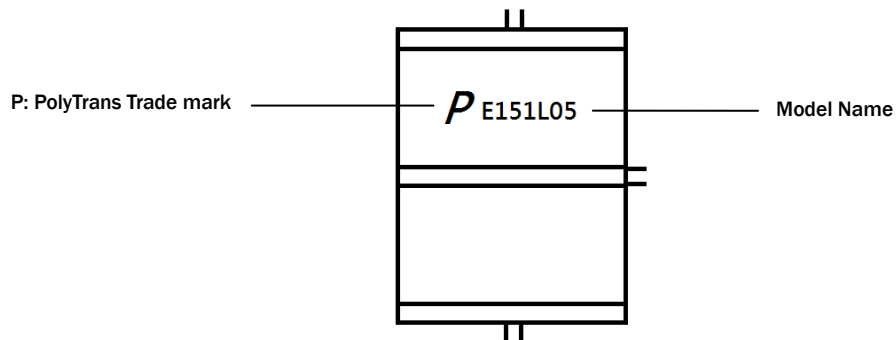
Symbol	Dimension (mm)
D	5.0±0.5
T	7.6±0.5
T ₀	11.4+0.0/-2.0
L	2.5±0.5
L ₀	5.0±0.5
d	0.8±0.1
F	3.8±0.3

Gas Discharge Tube – PG35E-L Series

Electrical Characteristics

Part Number	DC Spark-over Voltage @ 100V/S	Impulse Spark-over Voltage @ 1kV/ μ S	Impulse Discharge Current	AC Discharge Current	Minimum Insulation Resistance	Maximum Capacitance @ 1.0 MHz	UL Certificate (E474915)
	(V)		8/20 μ s 10 Hits	1s/5 Times			
	(V)		(kA)	(A)			
PG35E075L05	75 \pm 20%	\leq 600	5	5	1	1.0	✓
PG35E091L05	90 \pm 20%	\leq 600	5	5	1	1.0	✓
PG35E151L05	150 \pm 20%	\leq 600	5	5	1	1.0	✓
PG35E201L05	200 \pm 20%	\leq 700	5	5	1	1.0	✓
PG35E231L05	230 \pm 20%	\leq 700	5	5	1	1.0	✓
PG35E301L05	300 \pm 20%	\leq 900	5	5	1	1.0	✓
PG35E351L05	350 \pm 20%	\leq 1000	5	5	1	1.0	✓
PG35E401L05	400 \pm 20%	\leq 1000	5	5	1	1.0	✓
PG35E471L05	470 \pm 20%	\leq 1200	5	5	1	1.0	✓
PG35E601L05	600 \pm 20%	\leq 1400	5	5	1	1.0	✓

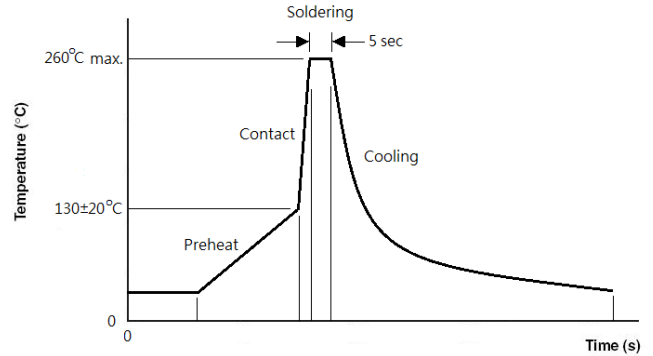
Marking Definitions



Gas Discharge Tube – PG35E-L Series

Lead Free Wave Soldering Recommendations

Preheat	
- Temperature Min (T _{min})	110°C
- Temperature Max (T _{max})	150°C
- Time (T _{min} to T _{max})	30-90 seconds
- Average Ramp-Up Rate	1~3°C/second
Peak Temperature	260°C
Max Time at Peak Temperature	5 seconds
Ramp-Down Rate	5 °C /second max.



Note: If the wave soldering temperatures exceed the recommended profile, devices may not meet the performance requirements.

Packaging Information

Part Number	Quantity	
	EA/Tray	EA/Carton
PG35E-L Series	100	5000