

## Gas Discharge Tube - PG25E-L05 Series

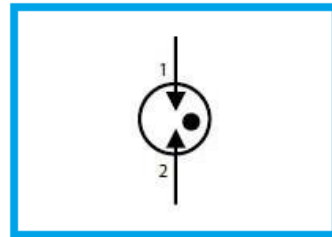
### Features

- DC Spark-over voltage: 75~600V
- Low Capacitance
- Micro-Gap Design
- Stable breakdown voltage
- RoHS & HF compliant
- High holdover voltage
- High insulation resistance
- Large absorbing transient current capability.



### Applications

- Communication equipment
- Test equipment
- Data lines
- CATV equipment
- Power Supplies
- Telecom SLIC protection
- Telecommunications

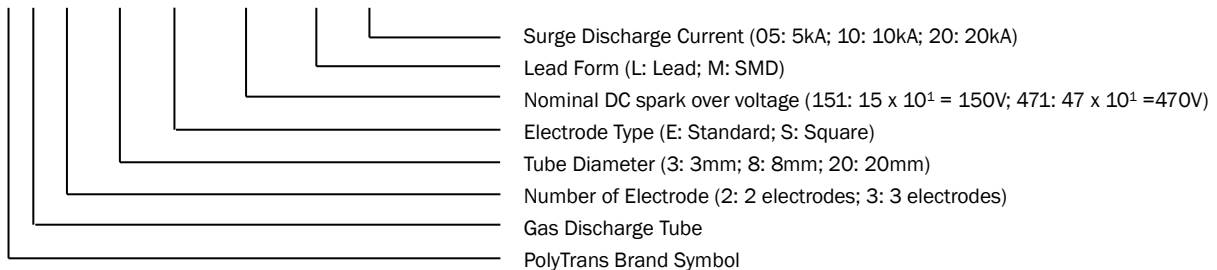


### General Characteristics Definition

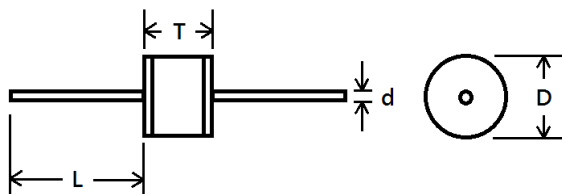
- Operating temperature: -50 ~ 125°C
- Storage temperature: -50 ~ 125°C

### Part Number Code

P G □ □ □ □ □ □ □ □ □ □



### Physical Dimensions



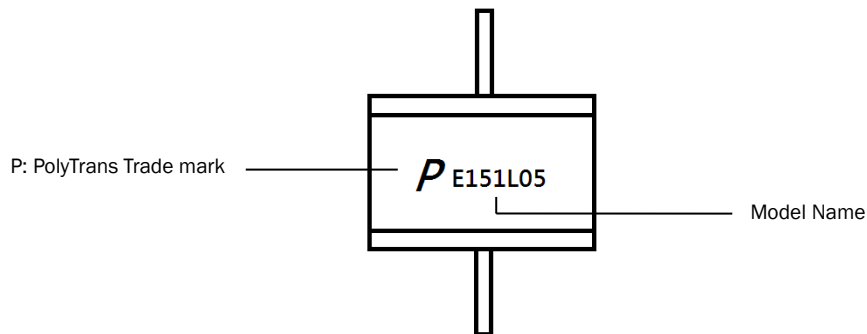
Symbol	Dimension (mm)
D	5.0±0.2
T	5.0±0.5
L	≥ 20.0
d	0.8±0.1

## Gas Discharge Tube - PG25E-L05 Series

### Electrical Characteristics

Part Number	DC Spark-over Voltage @ 100V/S	Impulse Spark-over Voltage @ 1kV/ $\mu$ S	Impulse Discharge Current 8/20 $\mu$ s 10 Hits	AC Discharge Current 1s/5 Times	Minimum Insulation Resistance	Maximum Capacitance @ 1.0 MHz	UL Certificate (E474915)
	(V)	(V)	(kA)	(A)	(G $\Omega$ )	(pF)	
	PG25E075L05	75 $\pm$ 20%	$\leq$ 600	5	5	10	
PG25E091L05	90 $\pm$ 20%	$\leq$ 600	5	5	10	1.0	pending
PG25E151L05	150 $\pm$ 20%	$\leq$ 600	5	5	10	1.0	pending
PG25E201L05	200 $\pm$ 20%	$\leq$ 700	5	5	10	1.0	pending
PG25E231L05	230 $\pm$ 20%	$\leq$ 700	5	5	10	1.0	pending
PG25E301L05	300 $\pm$ 20%	$\leq$ 900	5	5	10	1.0	pending
PG25E351L05	350 $\pm$ 20%	$\leq$ 1000	5	5	10	1.0	pending
PG25E401L05	400 $\pm$ 20%	$\leq$ 1000	5	5	10	1.0	pending
PG25E471L05	470 $\pm$ 20%	$\leq$ 1200	5	5	10	1.0	pending
PG25E601L05	600 $\pm$ 20%	$\leq$ 1400	5	5	10	1.0	pending

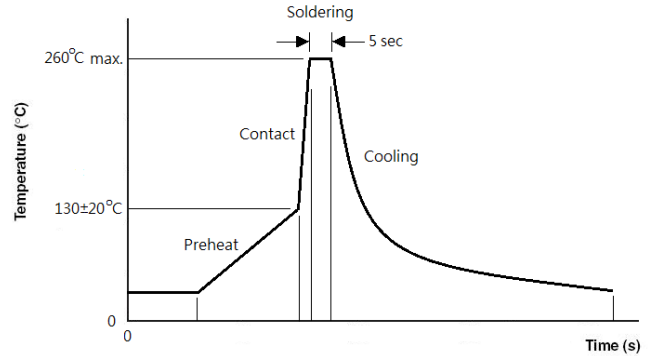
### Marking Definitions



## Gas Discharge Tube - PG25E-L05 Series

### Lead Free Wave Soldering Recommendations

Preheat	
- Temperature Min (T <sub>min</sub> )	110°C
- Temperature Max (T <sub>max</sub> )	150°C
- Time (T <sub>min</sub> to T <sub>max</sub> )	30-90 seconds
- Average Ramp-Up Rate	1~3°C/second
Peak Temperature	260°C
Max Time at Peak Temperature	5 seconds
Ramp-Down Rate	5 °C /second max.



**Note:** If the wave soldering temperatures exceed the recommended profile, devices may not meet the performance requirements.

### Packaging Information

Part Number	Quantity	
	EA/Tray	EA/Carton
PG25E-L Series	100	5000