

## Gas Discharge Tube – PG36E-L10 Series

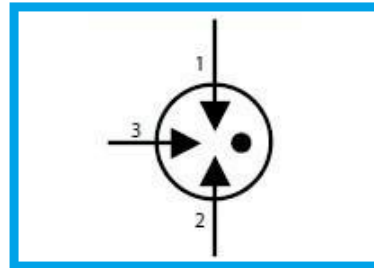
### Features

- DC Spark-over voltage: 75~600V
- Low Capacitance
- Micro-Gap Design
- Stable breakdown voltage
- RoHS & HF compliant
- High holdover voltage
- High insulation resistance
- Large absorbing transient current capability.



### Applications

- Communication equipment
- Test equipment
- Data lines
- CATV equipment
- Power Supplies
- Telecom SLIC protection
- Telecommunications

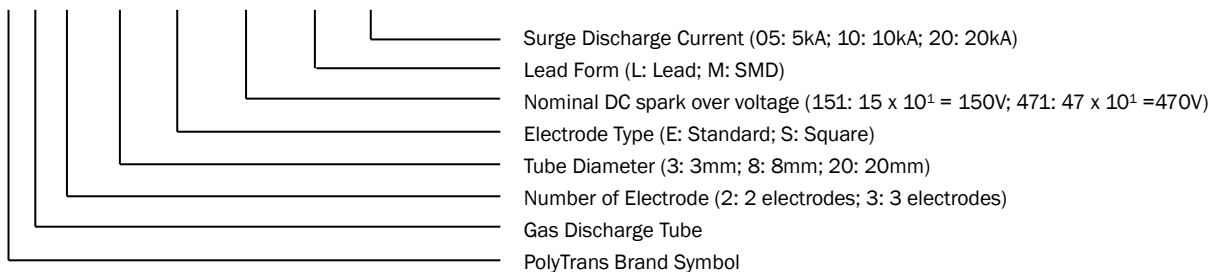


### General Characteristics Definition

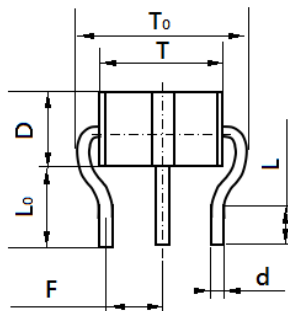
- Operating temperature: -50 ~ 125°C
- Storage temperature: -50 ~ 125°C

### Part Number Code

P G □ □ □ □ □ □ □ □



### Physical Dimensions



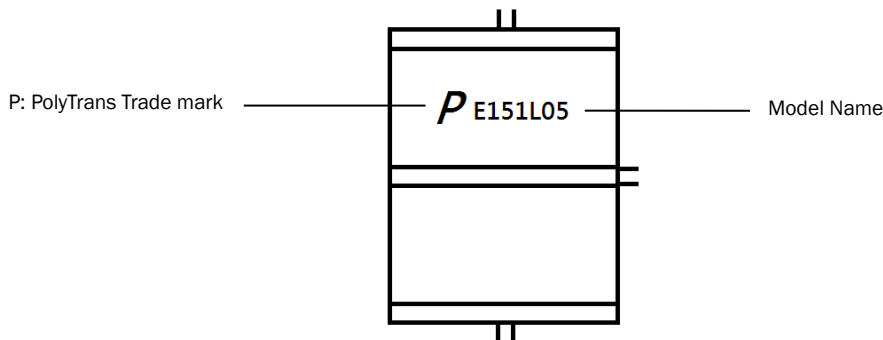
Symbol	Dimension (mm)
D	6.0±0.1
T	8.0±0.2
T <sub>0</sub>	12.2+0.0/-2.0
L	4.3+1.5/-0.0
L <sub>0</sub>	6.3±0.5
d	0.8±0.1
F	4.4±0.3

## Gas Discharge Tube – PG36E-L10 Series

### Electrical Characteristics

Part Number	DC Spark-over Voltage @ 100V/S	Impulse Spark-over Voltage @ 1kV/ $\mu$ S	Impulse Discharge Current	AC Discharge Current	Minimum Insulation Resistance	Maximum Capacitance @ 1.0 MHz	UL Certificate (E474915)
	(V)		8/20 $\mu$ s 10 Hits	1s/5 Times			
	(V)		(kA)	(A)			
PG36E075L10	75 $\pm$ 20%	$\leq$ 600	10	10	10	1.0	✓
PG36E091L10	90 $\pm$ 20%	$\leq$ 600	10	10	10	1.0	✓
PG36E151L10	150 $\pm$ 20%	$\leq$ 600	10	10	10	1.0	✓
PG36E201L10	200 $\pm$ 20%	$\leq$ 700	10	10	10	1.0	✓
PG36E231L10	230 $\pm$ 20%	$\leq$ 700	10	10	10	1.0	✓
PG36E301L10	300 $\pm$ 20%	$\leq$ 900	10	10	10	1.0	✓
PG36E351L10	350 $\pm$ 20%	$\leq$ 1000	10	10	10	1.0	✓
PG36E401L10	400 $\pm$ 20%	$\leq$ 1000	10	10	10	1.0	✓
PG36E471L10	470 $\pm$ 20%	$\leq$ 1200	10	10	10	1.0	✓
PG36E601L10	600 $\pm$ 20%	$\leq$ 1400	10	10	10	1.0	✓

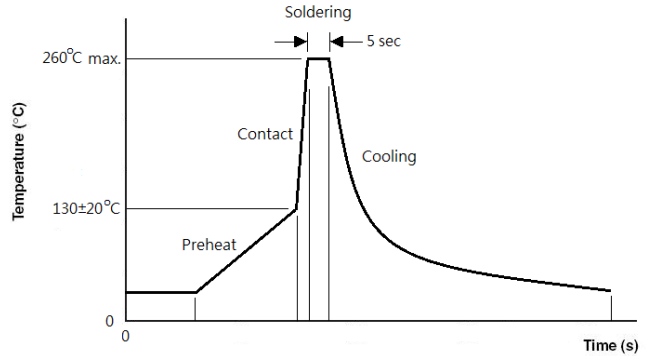
### Marking Definitions



## Gas Discharge Tube – PG36E-L10 Series

### Lead Free Wave Soldering Recommendations

Preheat	
- Temperature Min (T <sub>smin</sub> )	110°C
- Temperature Max (T <sub>smax</sub> )	150°C
- Time (T <sub>smin</sub> to T <sub>smax</sub> )	30-90 seconds
- Average Ramp-Up Rate	1~3°C/second
Peak Temperature	260°C
Max Time at Peak Temperature	5 seconds
Ramp-Down Rate	5 °C /second max.



**Note:** If the wave soldering temperatures exceed the recommended profile, devices may not meet the performance requirements.

### Packaging Information

Part Number	Quantity	
	EA/Tray	EA/Carton
PG36E-L Series	100	5000