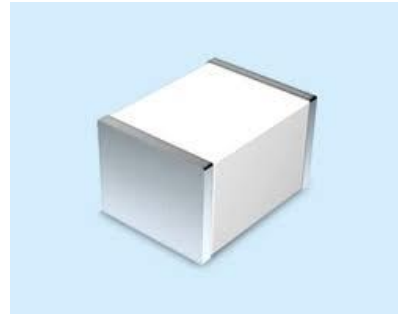


Gas Discharge Tube - PG22S-M005 Series

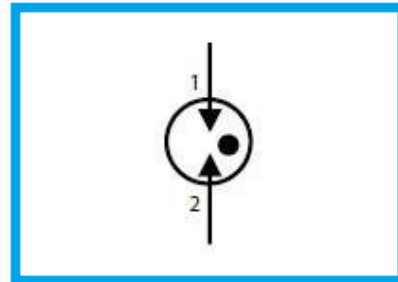
Features

- DC Spark-over voltage: 200 and 400V
- Low Capacitance
- Micro-Gap Design
- Stable breakdown voltage
- RoHS & HF compliant
- High holdover voltage
- High insulation resistance
- Large absorbing transient current capability.



Applications

- Communication equipment
- Test equipment
- Data lines
- CATV equipment
- Power Supplies
- Telecom SLIC protection
- Telecommunications

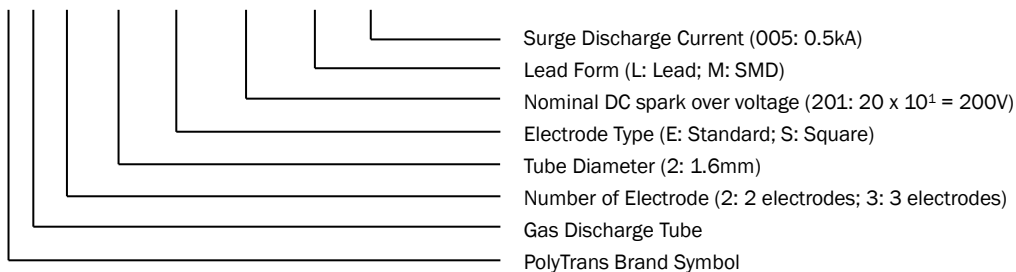


General Characteristics Definition

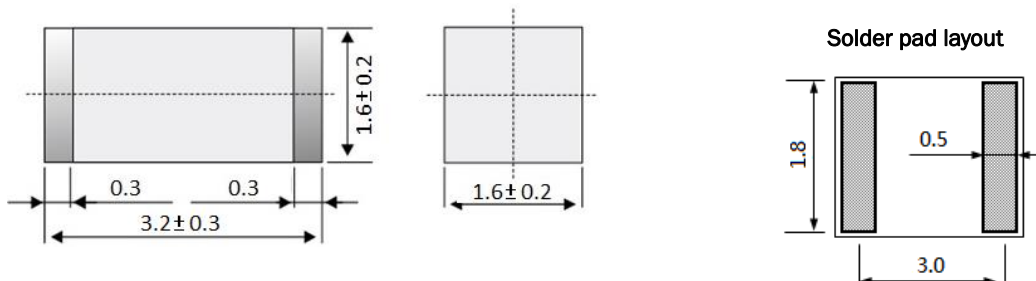
- Operating temperature: -40 ~ 85°C
- Storage temperature: -40 ~ 85°C

Part Number Code

P G □ □ □ □ □ □ □ □



Physical Dimensions



Note:

1. All dimensions are in millimeters.
2. No marking on the device.

Gas Discharge Tube - PG22S-M005 Series

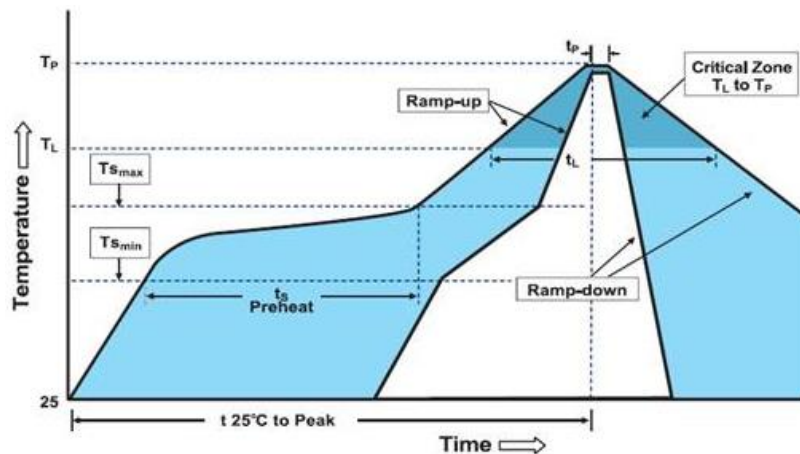
Electrical Characteristics

Part Number	DC Spark-over Voltage @ 100V/S (V)	Impulse Discharge Current	Impulse Life Test	Minimum Insulation Resistance Test @ *Note 1 (GΩ)	Maximum Capacitance @ 1.0 MHz (pF)	UL Certification
		8/20 μs 10 Hits (kA)	8/20 μs 300 Hits (A)			
PG22S151M005	150±30%	0.5	100	0.1	0.5	Pending
PG22S201M005	200±30%	0.5	100	0.1	0.5	Pending
PG22S401M005	400±30%	0.5	100	0.1	0.5	Pending

*Note1. Insulation resistance test condition :

DC Breakdown Voltage	≤150V	151~400V
DC Measuring Voltage	50V	100V

Lead Free Reflow Soldering Recommendations



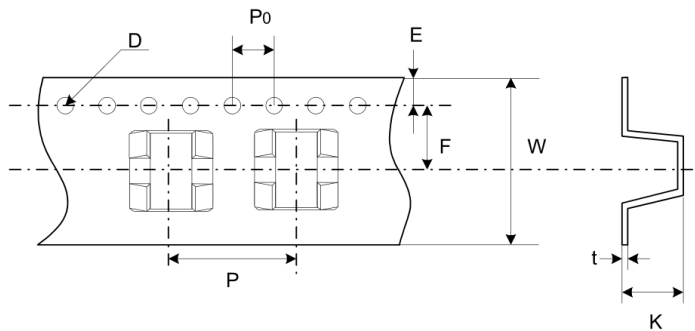
Profile Feature	Pb-Free Assembly
Average Ramp-Up Rate (T _{Smax} to T _P)	3°C/second max.
Preheat	
-Temperature Min (T _{Smin})	150°C
-Temperature Max (T _{Smax})	200°C
-Time (T _{Smin} to T _{Smax})	60-180 seconds
Time maintained above:	
-Temperature (T _L)	217°C
-Time (t _L)	60-150 seconds
Peak Temperature (T _P)	260°C
Time within 5°C of actual Peak Temperature (t _P)	20-40 seconds
Ramp-Down Rate	6 °C /second max.
Time 25°C to Peak Temperature	8 minutes max.
Storage Condition	0°C ~35°C, ≤ 70%RH

Gas Discharge Tube - PG22S-M005 Series

Note: If the wave soldering temperatures exceed the recommended profile, devices may not meet the performance requirements.

Packaging Information

Part Number	Quantity
	EA/Roll
PG22S-M005 Series	2500



Dimension	Millimeters
P	8.0±0.1
P0	4.0±0.1
D	1.55±0.05
E	1.75±0.1
F	5.45±0.1
W	12.0±0.3
T	0.3±0.05
K	2.0±0.1