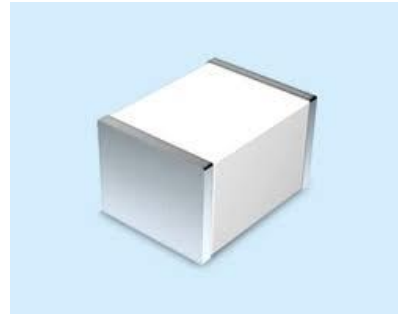


Gas Discharge Tube - PG23S-M01 Series

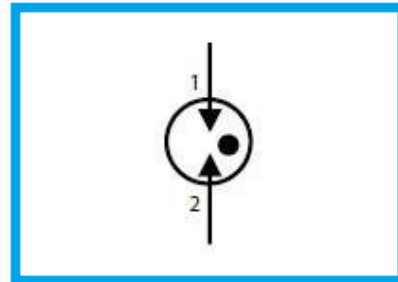
Features

- DC Spark-over voltage: 75~600V
- Low Capacitance
- Micro-Gap Design
- Stable breakdown voltage
- RoHS & HF compliant
- High holdover voltage
- High insulation resistance
- Large absorbing transient current capability.



Applications

- Communication equipment
- Test equipment
- Data lines
- CATV equipment
- Power Supplies
- Telecom SLIC protection
- Telecommunications

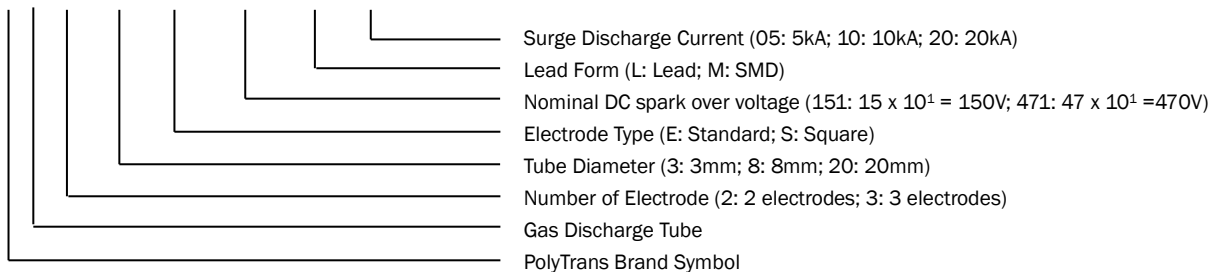


General Characteristics Definition

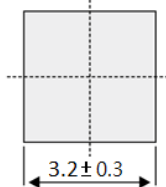
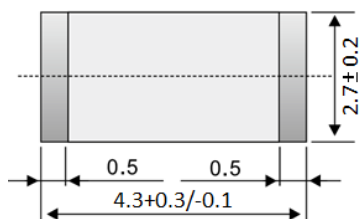
- Operating temperature: -50 ~ 125°C
- Storage temperature: -50 ~ 125°C

Part Number Code

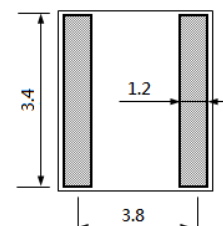
P G □ □ □ □ □ □ □ □



Physical Dimensions



Solder pad layout



Note:

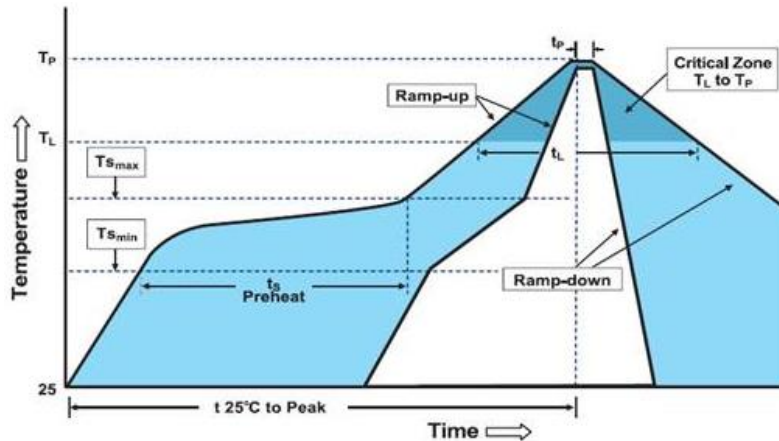
1. All dimensions are in millimeters.
2. No marking on the device.

Gas Discharge Tube - PG23S-M01 Series

Electrical Characteristics

Part Number	DC Spark-over Voltage @ 100V/S	Impulse Spark-over Voltage @ 1kV/ μ S	Impulse Discharge Current	Impulse Life Test	Minimum Insulation Resistance Test @ 100 Vdc	Maximum Capacitance @ 1.0 MHz	UL Certification (E474915)
	(V)		8/20 μ s 10 Hits	8/20 μ s 300 Hits			
PG23S075M01	75 \pm 25%	\leq 600	2	100	1	0.6	pending
PG23S091M01	90 \pm 20%	\leq 600	2	100	1	0.6	pending
PG23S151M01	150 \pm 20%	\leq 600	2	100	1	0.6	pending
PG23S201M01	200 \pm 20%	\leq 700	2	100	1	0.6	pending
PG23S231M01	230 \pm 20%	\leq 700	2	100	1	0.6	pending
PG23S301M01	300 \pm 20%	\leq 900	2	100	1	0.6	pending
PG23S351M01	350 \pm 20%	\leq 1000	2	100	1	0.6	pending
PG23S401M01	400 \pm 20%	\leq 1000	2	100	1	0.6	pending
PG23S471M01	470 \pm 20%	\leq 1200	2	100	1	0.6	pending
PG23S601M01	600 \pm 20%	\leq 1400	2	100	1	0.6	pending

Lead Free Reflow Soldering Recommendations



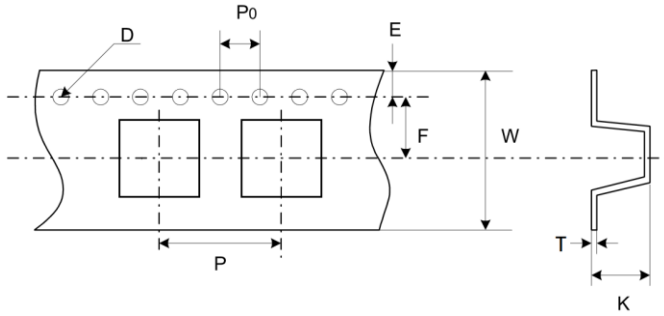
Profile Feature	Pb-Free Assembly
Average Ramp-Up Rate ($T_{s_{max}}$ to T_p)	3°C/second max.
Preheat	
-Temperature Min ($T_{s_{min}}$)	150°C
-Temperature Max ($T_{s_{max}}$)	200°C
-Time ($T_{s_{min}}$ to $T_{s_{max}}$)	60-180 seconds
Time maintained above:	
-Temperature (T_L)	217°C
-Time (t_L)	60-150 seconds
Peak Temperature (T_p)	260°C
Time within 5°C of actual Peak Temperature (t_p)	20-40 seconds
Ramp-Down Rate	6 °C /second max.
Time 25°C to Peak Temperature	8 minutes max.
Storage Condition	0°C ~35°C, \leq 70%RH

Note: If the wave soldering temperatures exceed the recommended profile, devices may not meet the performance requirements.

Gas Discharge Tube - PG23S-M01 Series

Packaging Information

Part Number	Quantity	
	EA/Roll	EA/Carton
PG23S-M01 Series	2000	16000



Dimension	Millimeters
P	8.0±0.1
P0	4.0±0.1
D	1.55±0.05
E	1.75±0.1
F	7.5±0.1
W	16.0±0.3
T	0.35±0.05
K	3.5±0.1