

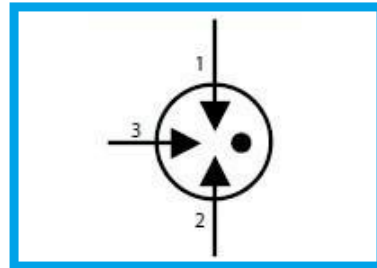
Gas Discharge Tube – PG36E-M Series

Features

- DC Spark-over voltage: 75~600V
- Low Capacitance
- Micro-Gap Design
- Stable breakdown voltage
- RoHS & HF compliant
- High holdover voltage
- High insulation resistance
- Large absorbing transient current capability.

Applications

- Communication equipment
- Test equipment
- Data lines
- CATV equipment
- Power Supplies
- Telecom SLIC protection
- Telecommunications

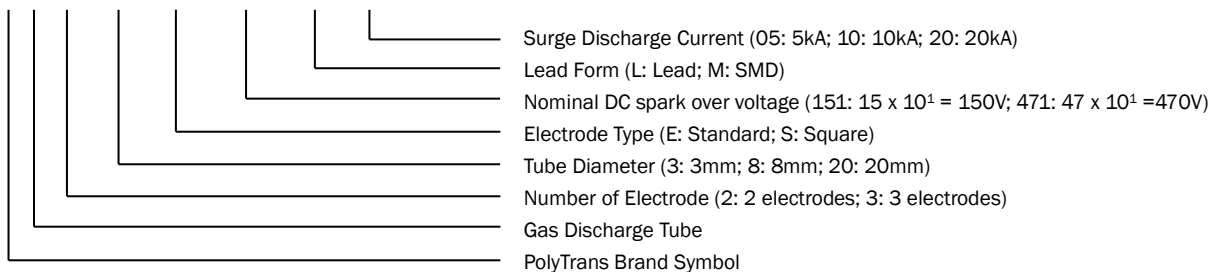


General Characteristics Definition

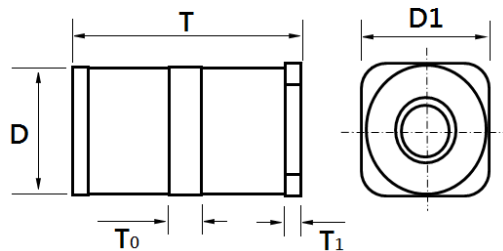
- Operating temperature: -50 ~ 125°C
- Storage temperature: -50 ~ 125°C

Part Number Code

P G □ □ □ □ □ □ □ □

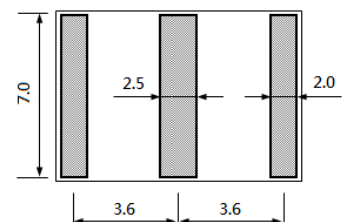


Physical Dimensions



Symbol	Dimension (mm)
D	6.0±0.2
D ₁	6.0±0.2
T	8.2±0.2
T ₀	1.60±0.1
T ₁	1.0±0.1

Solder pad layout

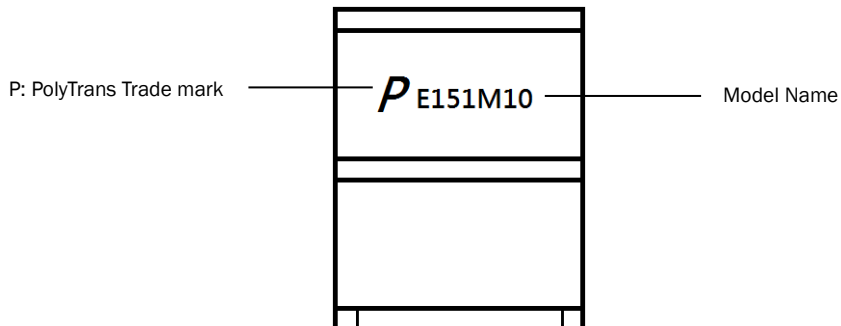


Gas Discharge Tube – PG36E-M Series

Electrical Characteristics

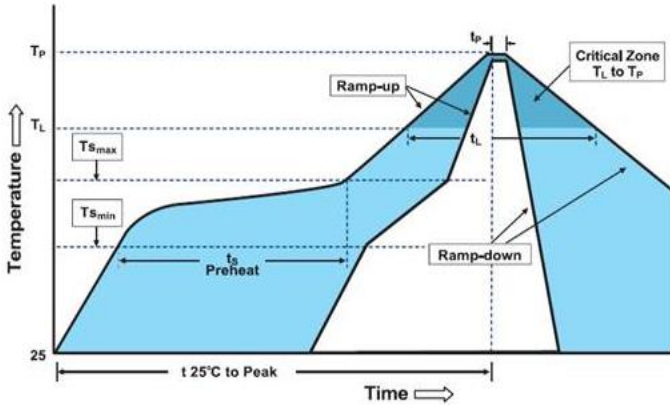
Part Number	DC Spark-over Voltage @ 100V/S	Impulse Spark-over Voltage @ 1kV/ μ S	Impulse Discharge Current	AC Discharge Current	Minimum Insulation Resistance	Maximum Capacitance @ 1.0 MHz	UL Certificate (E474915)
	(V)		8/20 μ s 10 Hits	1s/5 Times			
	(V)		(kA)	(A)			
PG36E075M10	75 \pm 20%	\leq 600	10	10	10	1.0	✓
PG36E091M10	90 \pm 20%	\leq 600	10	10	10	1.0	✓
PG36E151M10	150 \pm 20%	\leq 600	10	10	10	1.0	✓
PG36E201M10	200 \pm 20%	\leq 700	10	10	10	1.0	✓
PG36E231M10	230 \pm 20%	\leq 700	10	10	10	1.0	✓
PG36E301M10	300 \pm 20%	\leq 900	10	10	10	1.0	✓
PG36E351M10	350 \pm 20%	\leq 1000	10	10	10	1.0	✓
PG36E401M10	400 \pm 20%	\leq 1000	10	10	10	1.0	✓
PG36E471M10	470 \pm 20%	\leq 1200	10	10	10	1.0	✓
PG36E601M10	600 \pm 20%	\leq 1400	10	10	10	1.0	✓

Marking Definitions



Gas Discharge Tube – PG36E-M Series

Lead Free Reflow Soldering Recommendations

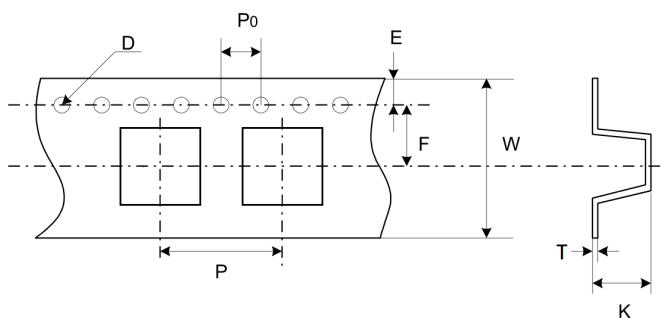


Profile Feature	Pb-Free Assembly
Average Ramp-Up Rate (Ts _{max} to T _P)	3°C/second max.
Preheat	
-Temperature Min (Ts _{min})	150°C
-Temperature Max (Ts _{max})	200°C
-Time (Ts _{min} to Ts _{max})	60-180 seconds
Time maintained above:	
-Temperature (T _L)	217°C
-Time (t _L)	60-150 seconds
Peak Temperature (T _P)	260°C
Time within 5°C of actual Peak Temperature (t _P)	20-40 seconds
Ramp-Down Rate	6 °C /second max.
Time 25°C to Peak Temperature	8 minutes max.
Storage Condition	0°C ~35°C, ≤ 70%RH

Note: If the reflow soldering temperatures exceed the recommended profile, devices may not meet the performance requirements.

Packaging Information

Part Number	Quantity (EA/Roll)
PG36E-M Series	750



Dimension	Millimeters
P	12.0±0.1
P0	4.0±0.1
D	1.55±0.05
E	1.75±0.1
F	11.5±0.1
W	24.0±0.3
T	0.50±0.05
K	6.30±0.10